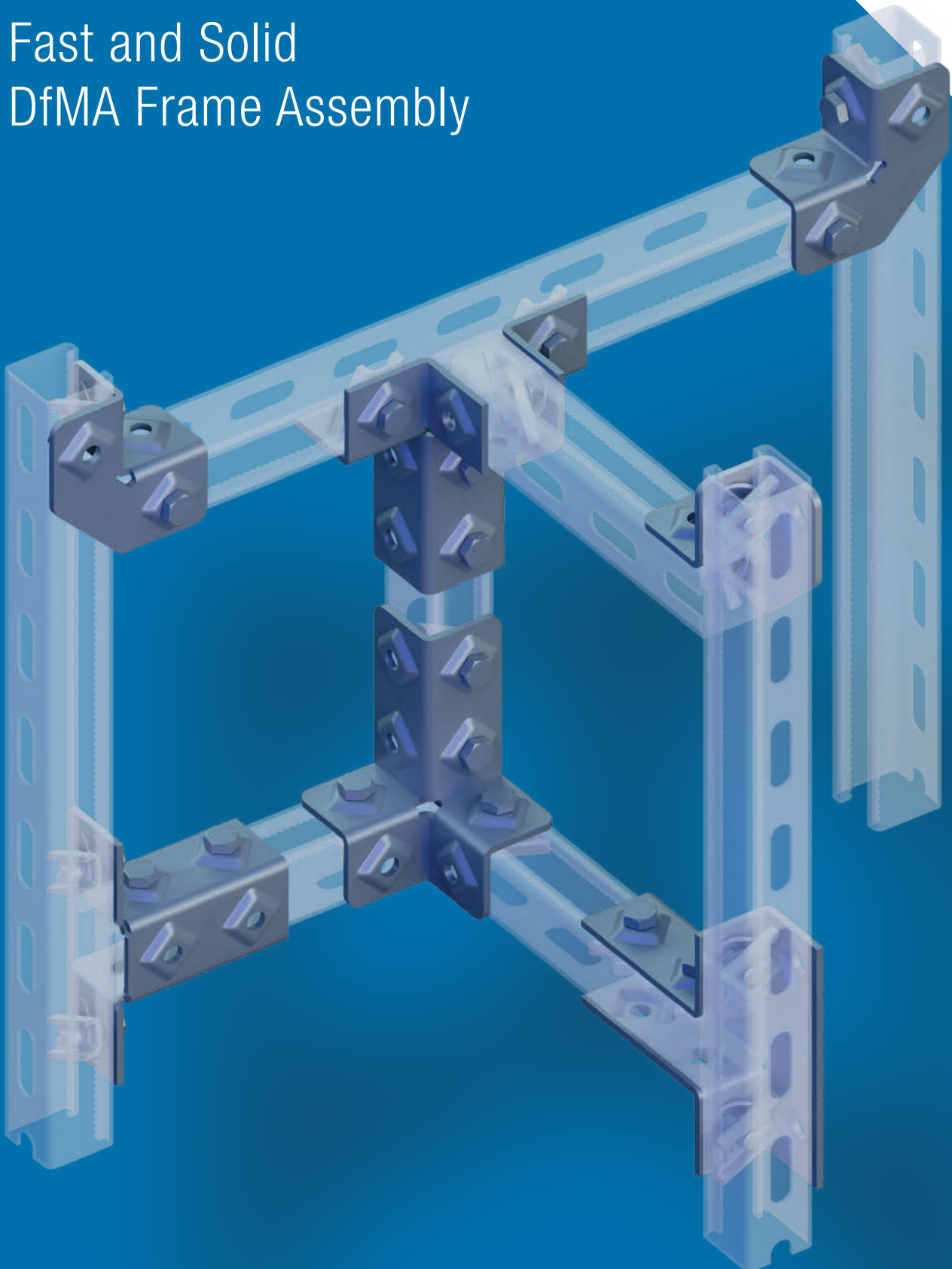


PRESSIX CC 41

sikla

New Strut Connectors

Fast and Solid
DfMA Frame Assembly



Fast Offsite Manufacturing from Galvanised Strut Channel Without Hot Works

The new Angle Connectors EV CC41 combine the workshop requirements of achieving reliably solid connections and labor saving. All channel opening configurations are covered by a dedicated EV CC41 variation.

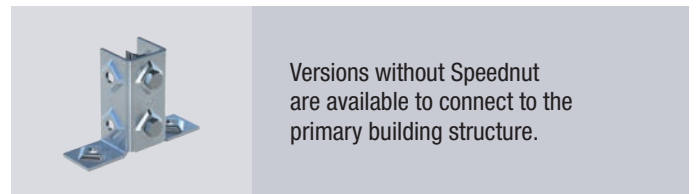
EV CC 41-1

EV CC 41-4

EV CC 41-5

EV CC 41-2 W

EV CC 41-3



Pressix CC

The one-hand-one-second connection technology to and between strut channels.

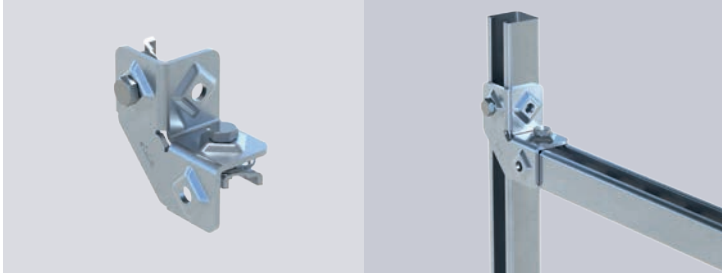
The CC connection technology locks automatically by pressing on the screw head and at the same time fixes the self weight of the component to prevent slipping. The reciprocal serration geometry of both channel nut and channel guarantees positive safety.



The Range of Strut Connectors

Each version available as
zinc plated and HDG-compatible

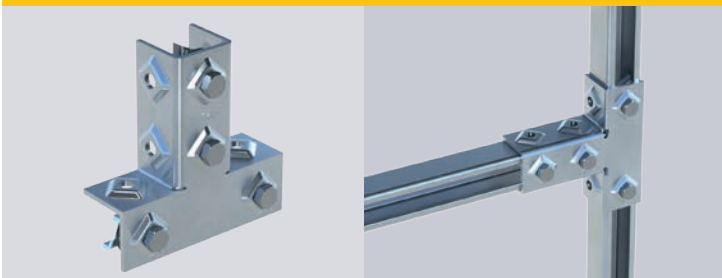
Angle Connector EV CC 41-1



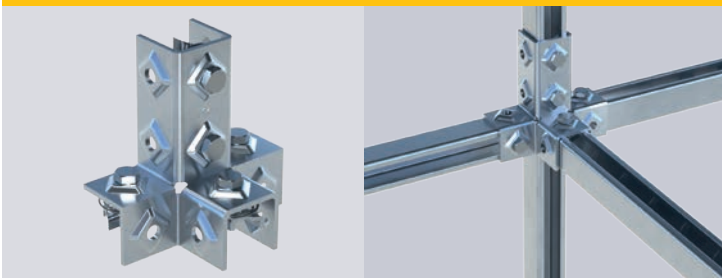
Angle Connector EV CC 41-2



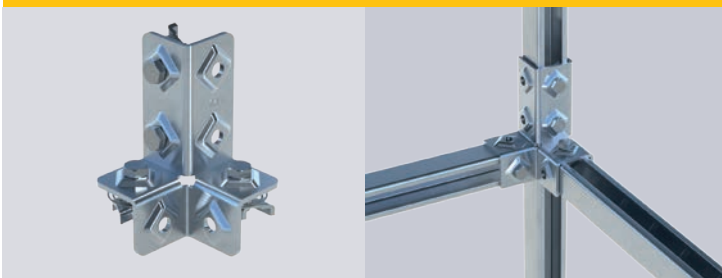
Angle Connector EV CC 41-3



Angle Connector EV CC 41-4



Angle Connector EV CC 41-5



Increased strength



The embossed Sikla diamond ensures an optimised tension curve in the fixing points. This allows a high tension torque and thus a higher load absorption can be realised. In addition, it prevents component deformation during the assembly process and guarantees reliable load absorption.



Watch our
installation video

Benefits:

- ✓ Fast and efficient assembly
- ✓ Completely pre-assembled connecting elements
- ✓ No small parts
- ✓ Flexible strut channel orientation
- ✓ Stiff and solid
- ✓ Coatings for indoors and outdoors

Some facts on Sikla Strut Channel Systems

Sikla's fast assembly components CC41 (Channel to Channel 41) are compatible with most generic strut channel such as sizes referred to as "P1000".

However they always achieve their best installation performance when used with original Sikla Channel MS 41.

Sikla Channel...

- offers with 16 different sizes the biggest range on the market
- is available from as small as 41/21 to as large as 41-75/75
- has a precise serration geometry inside the opening that fully interlocks with original Sikla channel nuts
- has a back-to-back range based on TOX® technology which works cold, therefore being more accurate than welded back-to back and less prone to corrosion
- is available pre-galvanised, hot-dipped galvanised and in stainless steel

The protection of all Sikla HCP finishes perform equal to or greater than the well established HDG finishes.

The Sikla logo consists of the word "sikla" in a bold, lowercase, sans-serif font. The letter "i" has a small yellow diamond shape above it.

Sikla UK & Sikla Oceania

sikla.co.uk

sikla.ie

sikla.com.au

sikla.co.nz